



TOITU TAIRĀWHITI

NGATI POROU - TE AITANGA A MAHAKI - RONGOWHAKAATA - NGAI TAMANUHIRI

PANUI

9 NOVEMBER 2021

Whitiki Tairawhiti

Tena tatou,

While the number of new community COVID-19 cases reported over the past five days averages out at 160 cases a day, heightened levels of unrest and angst is also on the rise amongst anti-vaccination and pro freedom of choice New Zealanders. The group called on the Government to revoke vaccination mandates, the Auckland boundary, and the traffic light system. Protesters hurled abuse at media and police, threw tennis balls and water at them, while holding flags and signs with messages against lockdown, vaccination, the media, and government.

Today's protest at Parliament, estimated in the thousands, also acted as a soap box for people with other axes to grind, including anti 1080 veterans, pro-Trump supporters, pro Brian Tamaki disciples and paradoxically people brandishing Te Whakaputunga flags.

While the protest at Parliament was the largest gathering today, another group blocked Auckland's northern boundary for an hour this morning and others attending rolling protest rallies at various locations throughout the country. The Protesters issued a number of threats, including. " *that if the country did not return to Alert Level 1 by Friday a nationwide "gridlock" of New Zealand's major cities would ensue*". No anti-lockdown, anti-vaccination demonstrators were arrested following the protest outside Parliament.

Speaker of the House Trevor Mallard said security had never been so tight in his more-than-30 years at Parliament.

New Cases

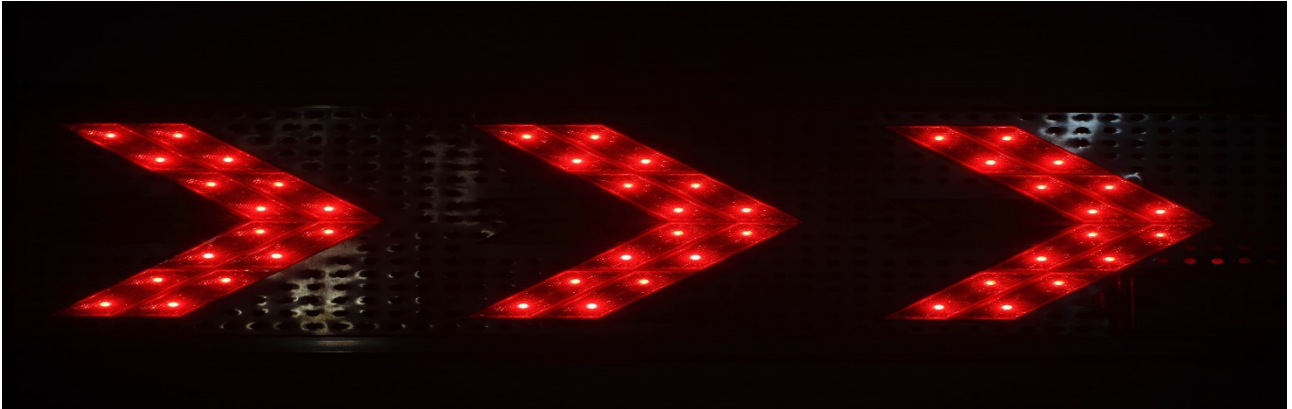
There were 125 new cases of COVID-19 reported Tuesday, 117 in Auckland, 2 in the Waikato and 6 in Northland. Waiheke Island has reported its first community case of COVID-19, after COVID-19 positive wastewater samples were notified after wastewater testing over the weekend. and a resident at another rest home in Auckland has tested positive for COVID-19.

Seventy-nine people are currently in hospital with the virus, down from a record 81 hospitalisations on Monday. Meanwhile, as reported yesterday, 20 residents and four staff members of Edmonton Meadows Care Home in Henderson have tested positive for Covid-19. Seven of the Covid-19 positive residents remain in appropriate ward-level care at Auckland hospitals.

Adjusting Alert Levels and to three step traffic light system

The Auckland region will shift to alert level 3, step 2 at 11:59pm tonight, Tuesday 9 November and the area of Northland currently in alert level 3 will return to alert level 2 at 11:59pm on Thursday.

Auckland will enter the 'Red' setting of the Government's COVID-19 Protection Framework, a three-step 'traffic light' system, once 90 percent of the three DHBs' eligible populations have been vaccinated with their second dose.



Experts weigh in on move to traffic light system

The Prime Minister said yesterday she expected Auckland will move to the Covid-19 Protection Framework - also known as the traffic light system - in just three weeks, once the city's eligible population is 90 percent fully vaccinated.

But University of Canterbury professor Michael Plank said it was too risky to move to the new system while cases rise sharply.

Retail stores can reopen in the city tomorrow and Plank said that could see case numbers rise as high as 500 per day around the beginning of December.

Firefighters given vaccine mandate

Firefighters were told 11 days ago they must receive their first Covid-19 vaccination by next week, or won't be able to work.

This has raised concerns about what emergency coverage will look like when their first vaccine deadline passes on Monday.

Volunteers make up four fifths of Fire and Emergency's (FENZ) 13,000 operational and community workers and some staff are concerned about the future of smaller rural stations if firefighters refuse to get vaccinated.

Other firefighters are frustrated that no proof of inoculation will be required as they are only being asked to make a declaration about their vaccination status.

FENZ said in a statement many staff must be vaccinated to undertake their roles as they work alongside medical practitioners and go into schools to provide education and respond to emergencies.

Police did not respond to questions about whether the mandate for firefighters would also apply to police, but said it was in discussions with the government about mandatory vaccination requirements



Vaccine certificates next week

To date, 89 percent of New Zealanders have had their first dose and 79 percent are fully vaccinated. Yesterday, 21,192 first and second Covid-19 vaccine doses were administered - 5103 first doses and 16,089 second doses.

Covid-19 Response Minister Chris Hipkins expects people will be able to get vaccine certificates late next week.

Vaccinated people will need the pass in order to access many businesses and events when the country moves to the traffic-light framework. Hipkins said the certificates were going through their final trials this week. He will provide an update on them tomorrow.

How safe is home isolation?

There's been a significant surge in people home isolating with COVID, amid concerns the programme is confusing, delayed, and becoming dangerous. This comes in the wake of the deaths of three people during the past week, who were self-isolating in their homes and the sharing of numerous stories of families, whanau, individual people who were doing it hard, isolating in their homes. The primary concern is a sense of being left to their own devices and being reliant on their own back up support because the health system is barely coping with the obligatory 24 hour 'how are you' call.

One Whanau Ora Manager working on the frontline helping vulnerable people in isolation, said what she's witnessed concerns her. She has seen a few cases of family members in overcrowded homes isolating either in their garage, separate areas of their home and even in their shed," she says. And by shed, that's a garden shed - not a sleepout.

In another case, she said a man spent days isolating in his car while waiting for a MIQ spot. Her team helped the man with food and a phone, however, he had to use public toilets and had to fill his car up' which is very dangerous and very risky to the public."

Pasifika Futures, Whanau ora Provider, Chief executive Debbie Sorensen said they helped organise accommodation for the man, that was safe, where he could stay in one place and be fed and looked after until he was clear.

His situation is not unique with many families, particularly Maori and Pacific ones, living in multi-generational and usually over-crowded homes where it was hard for people to properly self-isolate.

About 2000 people with the virus are living at home and those supporting them say the public health system is struggling to keep up. The system was becoming overwhelmed with the large number of cases and increasing numbers of fatigued and stressed staff,

Case details

Summary			
New cases reported during the past 24 hours			128*
Active cases	At the border		37
	In the community		2788
	Under investigation/other		0
	Total		2825
Most recent case reported			08 November 2021
Most recent case reported due to transmission (spread within our communities)			community 08 November 2021
Number of active cases			
	Change in last 24 hours	Total at present	Total since first NZ case
Confirmed	71	2824	7414
Probable	0	1	361
Total	71	2825	7775
Location of active cases			
	Change in last 24 hours	Total at present	
In managed facilities	-3	118	
In hospital	-2	65	
At home or in self-isolation	12	302	
Not in isolation	0	0	
Other	64	2340	
Source of active cases			
	Change in last 24 hours	Total at present	
People who travelled internationally and were diagnosed in managed facilities at the border	-5	37	

Source of active cases	Change in last 24 hours	Total at present
People in close contact with someone who caught COVID-19 while overseas	0	4
Caught COVID-19 from someone locally	76	2222
Caught COVID-19 within NZ, but source is unknown	4	23
Under investigation	-4	539

Iwi Update



Kaiti School Vaccination Clinic 8 Nov 2021

Tairāwhiti is at Alert Level 2

On Friday 5 November it was announced that two wastewater samples in Tairāwhiti have tested positive for Covid-19.

There are no confirmed cases of COVID-19 in Tairāwhiti at this time. Further tests will be carried out this week to determine if there is undetected community transmission of the virus in our region.

If you haven't had your first Covid-19 vaccination, or are due to have your second dose, then please do this as soon as possible.

Covid-19 drive thru testing is available at 110 Peel St, Gisborne, 9am-5pm.

We encourage anyone who has cold or flu-like symptoms and who has had any out of district exposure (e.g. has travelled to Auckland recently, close contact of a positive case, or has visited a location of interest) to get tested immediately for Covid-19.

Please ONLY get tested if you meet this criteria.

You can get vaccinated at the below locations.

Please be vigilant. We need our community here in Te Tairāwhiti to get tested and vaccinated. It is the best defence against Covid-19.

Find a vaccination or testing clinic that suits you

* No appointment. Just walk in.

* Unless stated otherwise, please feel free to bring yourself and other whānau for vaccination

Wednesday 10 November

Clinic	Venue	Time
Community Vaccination Centre	295 Palmerston Rd, Gisborne,	9am-5pm
Te Tini o Porou,	Cnr of Huxley Rd and Tyndall Rds., Gisborne	9am-5pm
Unichem Bramwell Pharmacy	232 Gladstone Rd,	9am-1pm
Drive-Thru	Harry Barker Reserve, Gisborne,	3.30pm-7pm
Blackpool Park	Blackpool St, Elgin, Gisborne	4pm-6pm
Gisborne Intermediate School, school only	156 Roebuck Rd, Gisborne,	1pm-4pm
Ilminster Intermediate School	70 Delautour Rd, Gisborne	9am-12.30pm
Te Wharau School,	28 Graham Rd, Gisborne	2pm-3pm
Ruatoria Community Clinic	Ruatoria,	9am-12pm
Mobile Clinic	Ruatoria	1pm-5pm

Thursday 11 November

Clinic	Venue	Time
Community Vaccination Centre	295 Palmerston Rd, Gisborne	10am-6pm
Te Tini o Porou	corner of Huxley Rd and Tyndall Rds., Gisborne	9am-5pm
Unichem Bramwell Pharmacy	232 Gladstone Rd	9am-1pm
Te Poho o Rawiri Marae Drive-Thru	24 Ranfurly St, Gisborne	3.30-7pm
Lytton High School, school only,	347 Nelson Rd, Gisborne	7.30am-12 noon
Patutahi Horticulture Zeafruit, workplace only	64 Bilham Rd, Patutahi	9am-11am
Tokomaru Bay Clinic	Tokomaru Bay, East Coast,	1pm-5pm

This information is up-to-date but please note that dates, times, and venues can occasional

Schools partnering with Hauora Providers to vaccinate.

Yesterday's vaccination clinic at Kaiti school is a great example of the collaboration that is occurring across our region, to ensure that the region achieves its 90% vaccination target by 12 December. The clinic was initiated by the school, to get as many of their year 7 and 8 students, whanau and staff vaccinated.

Kaiti school staff, along with the Whanau Ora Navigator and Support services staff did all the outreach work to their whanau, using a combination of school newsletters, phoning, door knocking and talking with parents and grandparents as they dropped off and picked up their children from school. Having good relationships with whanau, made it a lot easier for the school to engage them in a korero about being vaccinated.

Ngati Porou Hauora and Hauora Tairawhiti staff combined their efforts to administer the vaccines and Te Runanganui o Ngati Porou provided spot prizes. Fifty-three people were vaccinated during the day. A spokesperson for the school said, they had projected about 70 people, however, 17 whanau members told them they had gone off and got their vaccinations over the weekend, because of the covid-19 positive wastewater samples taken last week.

The school will continue to support the regions vaccination drive, through ongoing conversations with vaccination hesitant whanau, a door-to-door campaign to homes in the immediate school vicinity, which has been identified as one of the target areas and offers to run another clinic if required.

Watch the Youtube Video clip on <https://www.youtube.com/watch?v=i9aqn1qbO5U>



Kaiti

School Students and Hauora Tairawhiti Vaccination team member.

Regional Update

There has never been an easier time to go and get vaxed, with 47 Vaccination clinics operating across Tairawhiti this week. The District Health Board, Iwi Health Providers, local and Pharmacists will be providing a range of clinic options, including, static clinic's, drive through's, which are popular and mobile clinics to rural communities and suburbs that have high numbers of unvaccinated people.

Three pop-up event management teams activated by the Tairawhiti Arts Festival, on behalf of the regions, Vaccination operations group, will be supporting the clinics with promotions and advertising, event organisation, securing sponsorship and assigning staff to attend clinic events such as the Blackpool Park event in Elgin on Wednesday 10 November and the Drive-throughs.

The collaborations between local businesses, coordinated by Trust Tairawhiti and Turanga Health, schools organised by the two Iwi health providers, the Marae and Harry Barker Drive-throughs, mobile clinics offered in isolated rural communities, such as the Waikura Valley and the static clinics held in town, provide plenty of choice and improved accessibility for everyone.

We will need to maintain this level of collaboration, partnerships between iwi, health providers, local businesses, schools, and the regional vaccination operations team to achieve the 258 (1st dose) and 198 (2nd dose) daily vaccination average required between now and 12 December to achieve our 90 % fully vaccinated target.

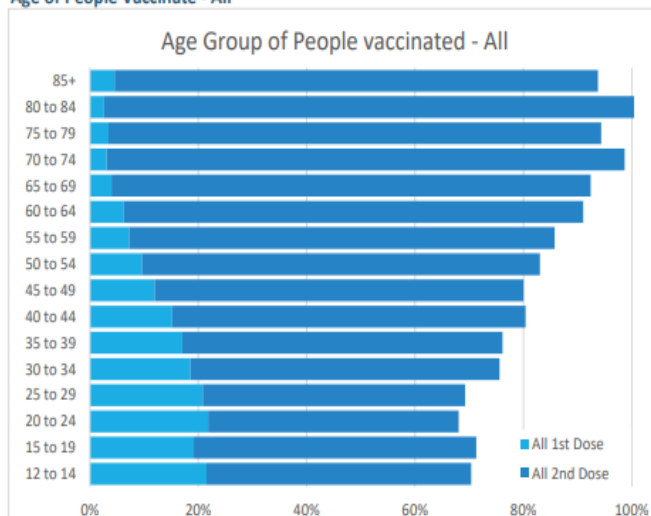
Tracking our vaccination rates

towards 90%		To get dose 1	To get dose 2
All		3,845	9,343
Māori		3,617	6,951
% Māori of all to ensure Māori at 90%		94%	74%
Daily target to achieve 90% fully vaccinated by 12 Dec @8/11			
		To get dose 1	To get dose 2
All		275	267
Māori		258	199

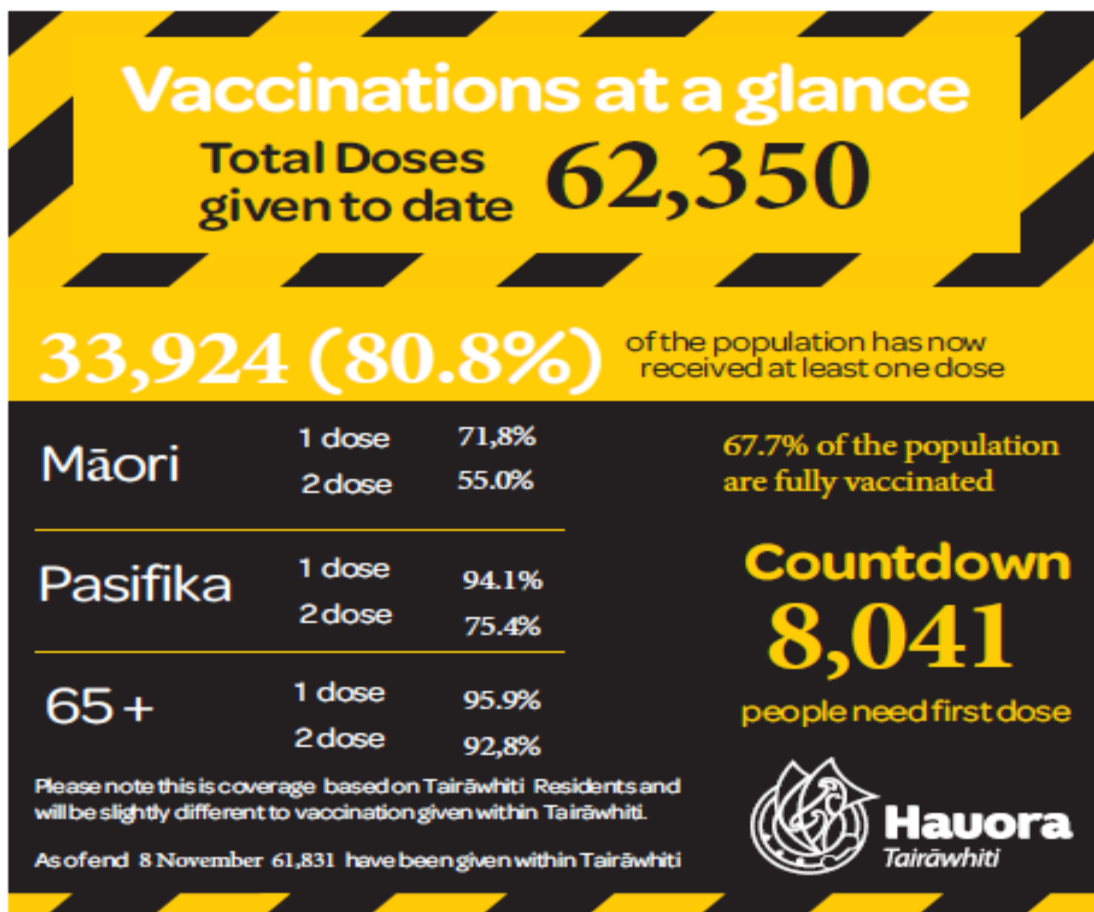
Tairawhiti COVID-19 Vaccine Summary - All



Age of People Vaccinate - All



Age Group	To be vaccinated		Total
	Dose 1	Dose 2	
85+	58	79	
80 to 84	-	-	
75 to 79	79	127	612
70 to 74	28	92	
65 to 69	206	314	
60 to 64	274	465	
55 to 59	463	698	2,996
50 to 54	533	834	
45 to 49	625	999	
40 to 44	563	999	
35 to 39	689	1,181	5,339
30 to 34	806	1,417	
25 to 29	1,039	1,742	
20 to 24	965	1,623	
15 to 19	1,033	1,723	4,599
12 to 14	726	1,253	



National Update

Vaccination Update

Air NZ domestic passengers will have to be fully vaccinated or Covid-19 negative to fly

All passengers on Air New Zealand domestic flights will need to be fully vaccinated or have a negative Covid-19 test from mid-December.

Everyone will be asked to show proof of their vaccination status or test result before they check in to their flight, the airline said.

Air New Zealand chief executive Greg Foran said with the Delta variant measures that once kept people safe were no longer enough and an extra layer of protection was needed.

The airline was working with the company building My Vaccine Pass for the government to ensure the Air New Zealand app would be compatible with the vaccination passports once they launched.



© Getty

"That will create a verification process that will allow people to get a boarding pass and get on the plane," he said.

The new requirement should be in place by 14 December and will apply to all passengers aged 12 and older.

It will be in place for an initial period until the end of March next year.

All tests and vaccines approved by the government would be accepted.

Travellers were encouraged to download the Air New Zealand app so they could easily connect it to their vaccination status in their vaccine pass.

Foran didn't think the technology, or the added pre-flight step would be difficult for people to adopt.

"Over 80 percent of our customers now use the Air New Zealand app to travel ... it's by far and away the most prevalent method by which people board our planes now.

"Simply all they have to do is push one button and they're good to go, it's just the verification status that they've been vaccinated."

The change was being made after "overwhelming" feedback from customers and employees, who wanted more protection during travel, Foran said.

Travellers who cannot provide proof before their flight can put their fare into credit or get a refund, if they have purchased a fare that allows that.

New COVID-19 Protection Framework

The new COVID-19 Protection Framework (CPF) will replace the current Alert Level system. New Zealand will transition to the framework as it becomes safe to do so and once the milestone 90% vaccination rate in each DHB milestone has been reached.

Like our current Alert Level systems there will be three settings Green, Orange and Red.

The framework uses COVID-19 Vaccination Certificates (CVCs) to minimise disruptions to people's lives and protect people from COVID-19.

Using Alert Levels to stamp out COVID-19 helped keep us safe from the worst impacts of COVID-19 that we have seen overseas. It's something we're incredibly proud of. While Delta, and its high transmissibility, has changed our ability to control COVID-19, the vaccine has enabled us to change the way we manage the virus.

High vaccination rates mean we can introduce a new system to support us to move to a new chapter, where COVID-19 is managed in a different way, minimising the impacts it has on our day-to-day lives.

More detail on how the Framework will be implemented will be available by the end of November, after further decisions are made by Ministers.

High vaccination rates mean we will soon be able to take a new approach to managing COVID-19 with fewer restrictions and less reliance on lockdowns to stop the spread of the virus. Work is now underway to develop guidance and detail to underpin the new COVID-19 Protection Framework, and we will only transition when it is safe to do so. We'll be talking with a wide range of people as this work progresses including community and business groups, education, faith-based and sport sectors, and other key stakeholders.

Vaccination information

When will mandatory vaccinations for workplaces come into being?

The timing for mandatory vaccinations coming into force is dependent on when New Zealand moves to the COVID-19 Protection Framework. The government will continue to work through the detail with businesses and unions to ensure we get the balance right.

Every District Health Board needs to reach 90% of their eligible population having received both doses of the COVID-19 vaccine before a change to the new framework. 90% is a milestone not an end point. The more eligible New Zealanders who get vaccinated the safer everyone is.

Auckland will be able to move sooner. This plan provides a clear path for Auckland to move out of lockdown as soon as 90 percent fully vaccinated is reached in each of the city's three DHBs.

*Minimum of 90% of all eligible Tairāwhiti people are vaccinated and
Living the best possible life in Tairāwhiti*

KIA MATAARA, KIA MANAWANUI